


Wood Veneer Interior

1. Full dust top, 1/2" thick **plywood**. Provides Jam proof drawers and keeps cabinetry square.
2. Sides are 1/2" thick **plywood** with 1/4" thick matching wood species added for finish sides.
3. Bottoms are 1/2" thick **plywood** flush to the top of frame stile, creating flush floors.
4. Shelves are 3/4" thick **plywood** and fully adjustable. Shelves are full depth in walls and 16" depth in bases. Front edge banded.
5. Backs of cabinets are 1/4" thick **plywood**, "fully captured" by top, bottom and sides.

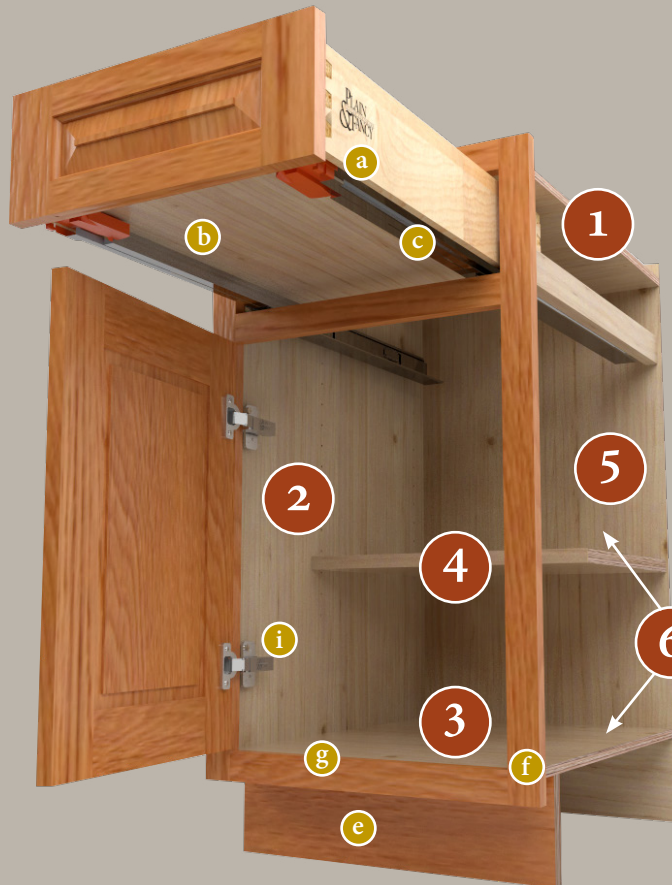
 Interior Hardwood has an Eco finish that is UV cured 100% transfer efficiency for durability and longevity.



Mortise and Tenon construction is how we build all of our face frames, resulting in extremely strong cabinetry.

Construction

FRAMED CABINETRY



Classic Interior

1. Full dust top, 1/2" thick **particle core vinyl laminated**. Provides jam proof drawers and keeps cabinetry square.
2. Sides are 1/2" thick **plywood** with 1/4" thick matching wood species added for finish sides.
3. Bottoms are 1/2" thick **particle core vinyl laminated** flush to the top of frame stile, creating flush floors.
4. Shelves are 3/4" thick **particle core** and fully adjustable. **Vinyl laminated on two sides**. Shelves are full depth in walls and 16" depth in bases. Front edge banded.
5. Backs of cabinets are 1/4" thick **medium density particle board, vinyl laminated** and "fully captured" by top, bottom and sides.
6. All interiors are 2 mill heat applied vinyl. (not paper) Will not water mark.



All Plain and Fancy drawer boxes are 5/8" thick solid wood, with time tested dovetail joinery.

Shared Features

- | | |
|--|---|
| <ul style="list-style-type: none"> a 5/8" thick hardwood dovetailed drawer boxes b 1/4" thick veneered plywood drawer bottoms, captured on all 4 sides. c Full extension under-mount-120 lb soft close guides d Case goods are tongue and dado construction: Precision machined and assembled (not shown in above drawing) e 3/4" thick by 4" doweled toe kick recessed 2 1/2" | <ul style="list-style-type: none"> f Face frames are mortise and tenon construction g Cabinet floors are flush with the front frame stile h 3/4" thick by 3" screw rail. (not shown in drawing) i All concealed hinges are soft close with 3-way-adjustability j All plywood, particle board and MDF is NAUF (No Added Urea Formaldehyde) and CARB2 compliant (not shown in above drawing). |
|--|---|



Manufactured in the U.S.A




Medley Construction

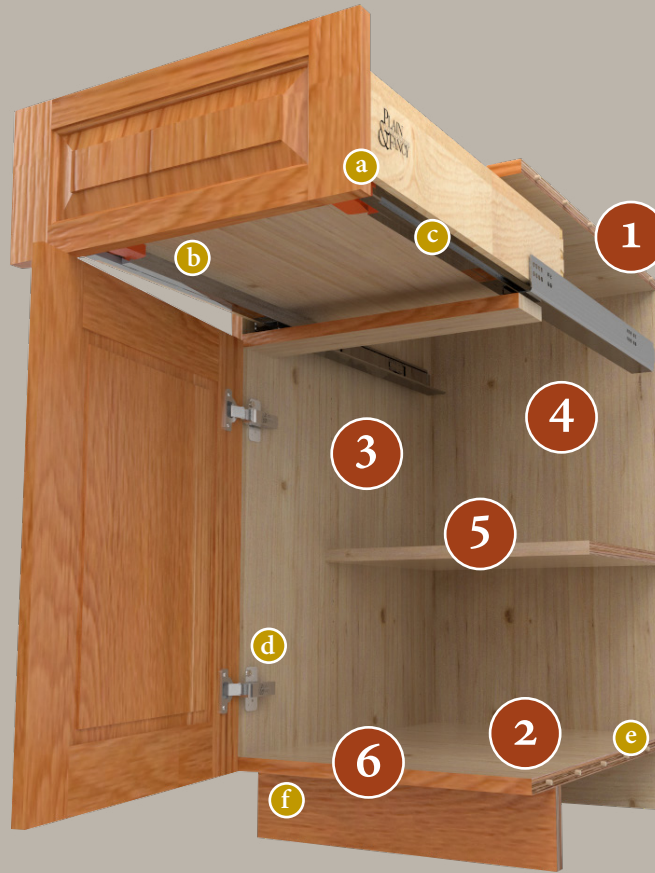
FULL ACCESS CABINETS

Wood Veneer Interior

1. Full dust top, 3/4" thick **plywood**. Provides jam proof drawers and keeps cabinetry square.
2. Top and bottom are 3/4" thick **plywood** with hardwood veneer.
3. Sides are 3/4" thick **Permacore** with exterior finished sides veneered to match the face.
4. Backs are 1/4" thick **plywood** dadoed into the sides.
5. Shelves are 3/4" thick **plywood** and fully adjustable. Shelves are full depth in walls and 16" depth in bases. Banded front edge.
6. Case edge-banded with complementary banding.

 Interior hardwood Eco friendly finish UV cured 100% transfer efficiency for durability and longevity.

Permacore is an engineered OSB (Oriented Strand Board) with a consistent and uniform thickness. It is also highly stable, NAUF compliant and CARB2 compliant.



Melamine Interior

white or wood grain

1. Full dust top, 3/4" thick **high quality melamine**. Provides jam proof drawers and keeps cabinetry square.
2. Top and bottom are 3/4" thick **high quality melamine**.
3. Sides are 3/4" thick **high quality melamine** with exterior finished sides veneered to match the face.
4. Backs are 1/4" thick matching **hardboard** and dadoed into the sides.
5. Shelves are 3/4" thick **high quality melamine** and fully adjustable. Shelves are full depth in walls and 16" depth in bases. Banded front edge.
6. Case edge-banded with complementary banding.



Many options are available for frameless cabinetry including exotic veneers, acrylic or high gloss foils and textured melamines.

Shared Features

- | | |
|---|--|
| <ul style="list-style-type: none"> a 5/8" thick hardwood dovetailed drawer boxes. b 1/4" thick plywood drawer bottoms, captured on all 4 sides. c Full extension under-mount-120 lb soft close guides. d Hinges are 120 degree clip on soft close technology with 3 way adjustability. e European 32 mm wood dowel construction used on all components. f 3/4" thick by 4" doweled toe kick recessed 2 1/2" | <ul style="list-style-type: none"> g 3/4" thick by 5" screw rail dadoed into side panels (not shown in above drawing). h Reveals for doors and drawers are 3/16" top of wall and base cabinets. Flush at the bottom of walls and base cabinets. 1/16" at sides and 1/8" between doors (not shown in above drawing). i No up charge finished ends, except for foils and laminates. (not shown in above drawing). j All plywood, particle board and MDF is NAUF (No Added Urea Formaldehyde) and CARB2 compliant (not shown in above drawing). |
|---|--|



Manufactured in the U.S.A

